



Bethel Presbyterian Review

The Pastor's Corner

I can't believe Christmas is almost here again. Indeed, it is in many ways the most joyful and stressful time of year because the coming of the holiday has become a celebration of commercialism, overindulgence, hours on Amazon or other shopping websites, crowded trips to the Walmart, Target, and for some still, the mall. Parents and grandparents wrestle and fight with one another to get their hands on the latest trendy gifts, usually toys and electronics.

Yet the stress that is often caused by this time of year is not what advent is about. It is about anticipation and joy directed to God who, in his all-encompassing love for us, sent a savior into this world for the sake of our salvation. In this act of divine intervention, God is looking for us. In the coming of Christ, God is faithful, and faithfulness is one of the defining attributes of the Divine.

In Advent, we are reminded that the ultimate example of faithfulness is demonstrated to human beings by God's gift to us of the incarnate Word, and what it truly means to prepare for Him. This is a season in which the reality of ultimate hope is fulfilled. It is an answer that we prayed for and dared not believe. God has bridged the gap created by sin and given us the gift of a savior that surely makes death nothing but a stepping stone to a more intimate relationship with the creator.

With this as our outlook, all of a sudden the preparation doesn't seem all that difficult anymore, it doesn't seem too early...in fact, maybe four weeks isn't enough! A faithful God is preparing to send a faithful savior and truly we need to prepare.

This type of preparation helps bring peace to a very stressful time for many. The joy and peace we sing about and celebrate this time of year are often standing side by side with loneliness and despair. The stress of the season strikes deep into the souls of many. So, during this advent season, may we ourselves look forward to the coming of the Prince of Peace and in doing so help others find peace in the midst of the storm.

In this issue:

- Welcome new members!
- Celebrations
- Per Capita 2021
- Deacon's Update
- Shower of Cards
- Christmas Flower Sale
- Giving Tree
- Note of Thanks
- Bethel Recipe Corner -
Ginger Snaps
- Bethel Events
- Sunflower Update
- Special Events - Lux
Choir
- Pause for Poetry



Hear the good news: there is joy, there is hope, there is renewal. It can be found in the coming of the Christ who, indeed, is the Lord of our hearts. When we hold to this basic tenet of faith, we begin to realize that Christmas is not about buying, selling, shopping, parties, gatherings, or anything material. Christmas is about Christ and our state of preparation in welcoming him into our homes, our hearts, and our lives. Believe it! Live it! Share it!

Food for thought...Pastor Todd



Bethel welcomed four new members in November!
Congratulations to Douglas & Rebecca Smith and
Bruce & Krista Batchelor.

DECEMBER

Happy
Birthday



Card Shower Request

Ann Edie's Birthday is December 15th!

If you'd like to send her
some birthday greetings,
her address is below. Thank you!

1345 W. Jarrettsville Road
Forest Hill, MD 21050



Sarah Scott 12/1

John Cairnes 12/3

Kristin Kirkwood Feldmann 12/3

Lisa Calary 12/4

Sherry Kirchner 12/5

William Scott 12/5

George Denbow 12/6

Dick Walker 12/7

John Shaul 12/8

Carolina Galliher 12/9

Steve Saneman 12/9

Heather Saneman 12/14

Ann Edie 12/15

Maurice Howard 12/15

Theresa Sachs 12/15

Kristin Comer 12/18

Joan Murrell 12/18

Rita Cairnes 12/19

Abigail Lowe 12/21

John Adair 12/24

Susie Horn 12/24

Jennifer Daughton 12/26

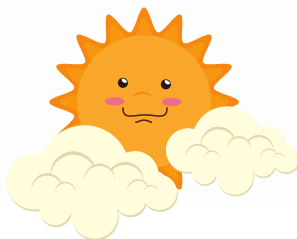
Lynda McRee 12/30

Michael Alexander 12/31

2021 Per Capita

The Per Capita fee for each congregation member for 2021 is **\$36.06**. Please be sure to submit your portion by the end of the year.

Thank you!

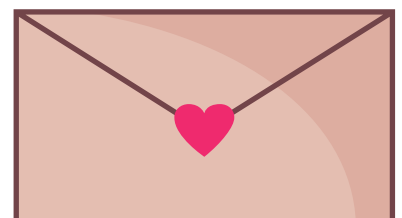


Shower of Cards

Our featured
Bethel Members
for December are:

George & Pat Denbow
2008 Schuster Road
Jarrettsville, MD 21084

Send a little Sunshine!
Each month we select a
member (or members) to
shower with cards or
notes of love, support,
encouragement and
good cheer!

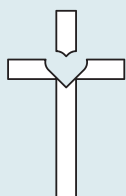




Deacon's Update

We uphold the following members, relatives and friends in our prayers and pray God’s healing upon them:

- The Fielder Family
- Janet Carty, friend of Nancy Mory
- The Berlage Family
- Doug Arnold
- Sandy Hughes
- Charles McKenzie, father of Gail Lowe
- Holly Robinson, sister of Becca Smith
- Nelson Berigtold
- Charlotte Scott, sister-in-law of Dan Scott
- Barbara Kirchner, mother of Dave Kirchner
- Ed Calary
- Max Montfort, friend of Tom and MaryLee Swift
- Dorianne Griffey
- Janet Kauffman
- George Reeves
- Kelly Jarrett Reeves and Robbie Reeves, son & daughter-in-law of the Reeves
- Brendan Lins, grandson of Ron & Andi Holmes
- Henry Kraft, grandson of Gail & David Thomas
- Frank Clement, friend of Sam & Marsha Brooks
- John Dorn, friend of John and Rita Cairnes
- Beverly Schmidt
- George Cowman
- Howard Eisner
- George Denbow
- Jessica Sambor
- Debbie Dahl, friend of Lisa Robbins



Christmas Flower Sale



If you would like to purchase a Christmas Flower in memory of or in honor of a family member, we will be accepting donations beginning this week. Please fill out the form below with the information you would like in the Christmas Eve Bulletin. There will be an arrangement in the church during the Christmas Eve services. After the Christmas Eve service, you are invited to take a flower from that arrangement home in memory or in honor of your loved one. We would ask that you have your donations in by **December 19th** so we can have the insert prepared for the Christmas Eve Service. Please contact the church office with any questions.

Name: _____ Message: _____
Name: _____ Message: _____
Name: _____ Message: _____



We are gratefully accepting donations for Mason-Dixon Community Services to help local families in need this holiday season. Please look for the Giving Tree in the back of the sanctuary. Checks should be made payable to Bethel Presbyterian Church. Thank you!



Thanks to our Sunday School youth for making cards for our veterans and active-duty military! They were delivered and will be sent out soon! Thanks to Mission BBQ Bel Air for organizing and mailing!

Ginger Snaps Submitted by Nancy Berigtold

Cream together:

¾ cup Crisco

1 cup sugar

Add:

1 egg

1/4 cup DARK molasses

Add:

2 cups flour

¼ tsp. salt

2 tsp. baking soda

1 tsp. each of ginger, cinnamon, cloves

Roll into balls & then in sugar; place on ungreased pan.

Bake at 350 degrees for 8-10 minutes



Bethel Recipe Corner



Do you have a recipe to share?

We'd love to feature **your** favorite recipe in a future newsletter. Please email your submission to lisa@bethel-md.org or drop off a copy to the church office. Everyone loves those tried-and-true recipes from our church community!

Bethel Events



The Bethel kids had
their own special
Thanksgiving feast!





Children's lesson on
Harvest Home Sunday



Elva Hurst presented her
"Chalk Talk," which told a
beautiful story of the first
Thanksgiving and the
meaning of faith! Truly a
sight to behold!

Movie Night Fun!

Lots of smiles and laughter were
on display at Bethel's Abbot &
Costello movie night. We hope
you can join us next time!



The Sunflower Fundraiser was a great success this year!

Here's an update from Rev. Melissa McDade

First of all, a big THANKS to everyone for your support and hard work this year! It was a great year and we had a great time!

- We were open 8 days over 3 weekends.
- We raised thousands of dollars to help people in need right here in our community.
- Over 300,000 folks followed us on Facebook
- Our community sponsor list is growing, and after our festival, Jarrettsville Federal asked to be included, too.
- Freestate Challenge Academy was able to help us one day; we had a great group of lacrosse players, plus many church and community members!
- A local bee keeper has approached us to participate next year. And given how many people asked about the bees -- that should be great!
- We will continue to collect newspaper bags (ask folks not to include ones already knotted), and vases (please make sure they're clean!)
- We're trying to come up with ideas that would add to our festival: maybe a music festival one weekend, more food trucks, a hayride, face painters, etc. We will plan to meet in March or April to start planning some of these things. If you know of anyone who would like to help co-ordinate these kinds of things, we need more people on board!

Please let us know if you have more ideas. And, as always, if you hear of someone in need, please let us know, so that we can help.

Blessings, Melissa



Join us for a Special Event!

Lux Choir Concert



Join us for an afternoon of beautiful choral music

Sunday, December 19th @ 4:30 p.m.

with refreshments to follow

Free and open to public

There will be a freewill offering towards Lux Choir



Pause for Poetry

The Christmas Spectrum
by Amos Russel Wells

Seven points hath the Christmas star:
One is the love that shines afar
From God to man; and one is the love
That leaps from the world to the Lord above;
And one is good will on the happy earth;
And one is purity, one is peace,
And two are the joys that never cease,—
God's joy,
Man's joy,—
Aflame in the star of the wonderful Birth.

And the light of God's love is a golden light,
And man's love to man is crimson bright,
And man's love to God is an azure ray,—
Alas when it flickers and dies away!
And the seven rays through the worshipping
night,
Like the flash of all jewels, exult and play,—
God's joy,
Man's joy,—
Yet they shine as one, and the star is white.

merry
CHRISTMAS



Bethel Presbyterian Church
4135 Norrisville Road
White Hall, MD 21161

