

# BETHEL PRESBYTERIAN CHURCH



1769 - 2019

A CELEBRATION OF 250 YEARS OF  
FAITH AND SERVICE

## Welcome to Bethel Presbyterian Church's 250<sup>th</sup> anniversary celebration!

During the course of Bethel's ministry, generations of the faithful have been a prophetic voice first in the local community, then through loose associations with early colonial presbyteries founded in Philadelphia and Delaware. Over 20 years later, Bethel became a charter member of the Baltimore Presbytery.



*Rev. Todd D. Smith  
28<sup>th</sup> Pastor of Bethel*

There are few institutions in our country that can claim to have played a role in the events that impacted the evolution of our great nation, which is reflected in the witness of the saints of God interred in the cemetery behind the church. These generations are voices of triumph and trial, success and struggle, heroism and even a bit of skullduggery.

The wind of the spirit blows, and the word of our Lord is within the hearts of women, men, and children everywhere and in every generation. If one ponders the possibility of Bethel's witness, thousands or even tens of thousands have been touched by the Holy Spirit locally, regionally, nationally, and worldwide, and have come to a saving relationship with our Lord Jesus Christ.

Bethel shares this celebration with you, as thanks is given to God acknowledging the witness to which you have been invited. During this celebration year, 250 years will be remembered with drama, music, lectures, historical reenactments, good food, and other events. Thank you for joining with Bethel for this celebration acknowledging God's presence and giving thanks for Bethel's ministry in the present, past, and future.

Yours In Christ,

Pastor Todd



Bethel Presbyterian Church was established in 1769 when 91 settlers, primarily of Scottish descent, pledged funds to call the first minister to lead the congregation. The United States was not yet a nation, Harford County was still part of Baltimore County, and the wilderness of the Upper Nodd Forest was still being slowly cleared to make way for farmlands to cultivate. The early Bethel congregation had been meeting regularly without a settled pastor for around ten years, and this decision to formally unite met with approval from the New Castle Presbytery of Delaware as the Baltimore Presbytery was yet to be created.

A request was made by the new congregation to call the Rev. John Clark. He accepted the call in October 1770. Elder James Hope donated land and around this time a log structure was built to house the worship on Sunday. In 1802, due to the growth of the congregation and fire damage to the former building, a stone meeting house was erected in the middle of the present cemetery. The current sanctuary building was constructed in 1888 and the Christian Education Building was added in 1952. A connecting foyer joined the two buildings in 1992.

For two and a half centuries, Bethel members and attendees have kept the faith and served our God and community. We have been served by 28 different called pastors and 2 called associate pastors. Our faith has sustained us through our nation's beginning, a horrific civil war, two world wars, and countless other challenges. We give thanks and praise to those who have paved the way and set the standard for our Church and for what it can accomplish with God's help.

As we celebrate 250 years as a congregation, we invite all to join us for worship and attend the many events that will recognize a unique history to our area and our denomination. We view this opportunity as a chance to celebrate not just our church but also the presence of Christian values and beliefs that have helped establish our nation and strengthen our families, relationships, and communities throughout our area.

We believe that God has given us the opportunity to serve humankind not just locally but globally and we take on that charge with confidence, enthusiasm, and humility. With His guidance and patience, we stand ready to become the faithful stewards of the past and the willing workers of the future in His name.

## **January 2019**

- Sunday Services begin at 10:30 am
- Sunday, January 6 Epiphany Sunday; celebration of Holy Communion
- Sunday, January 13 Special recognition of Community Members employed in the Agricultural Profession
- Tuesday, January 15 Proclamation presented to Bethel by the Harford County Council
- Sunday, January 20 Guest Minister, Rev. Kimberly Secrist-Ashby, Fallston Presbyterian Church - *The Role of Women in the Church*  
Guest Liturgist, the Honorable Chad Shrodes, Harford County Council, District D
- Sunday, January 27 Meeting of the congregation to receive the Annual Report; after the service

One Sunday each month during our Sesquibicentennial Celebration Year, Bethel will invite everyone from our community who is employed in a certain occupational field to attend our Sunday service. We want to recognize the many contributions to our community and our shared heritage that various fields of work have made and continue to make to the success of our country. Faith has guided us in choosing our profession and many feel called to do the work they do. Faith and service are two of the hallmarks of our Christian traditions and values.

## **February 2019**

- Sunday Services begin at 10:30 am
- Sunday, February 3 Celebration of Holy Communion
- Sunday, February 10 Guest Worship Leader Rev. Dr. Amy Plantinga Pauw, Professor of Doctrinal Theology at the Louisville Theological Seminary  
3 pm; Presentation by Dr. Pauw – *The Church in Ordinary Time; The Early History of the Presbyterian Faith in the United States*
- Sunday, February 17 Special recognition of Community Members employed in the Health Professions
- Sunday, February 24 Guest Liturgist, Mr. David McKenzie, son of former pastor Rev. Dr. C. Stewart McKenzie who served Bethel from 1935-1942

Forming a church and congregation in the late 1700s was probably a welcome diversion to the settlers in the wilderness of the Upper Nodd Forest as daily life was a constant struggle. Clearing land for crops and pasture, building homes and barns from the timber being cleared, and raising large families made for an arduous life. Native Americans were still present in the area and lethal skirmishes still occurred.

Yet the faithful, largely Scots-Irish inhabitants felt the need to worship together and began meeting as early as 1761, according to various family records. Soon a log cabin sanctuary was constructed on land donated by James Hope and the beginnings of a stayed congregation took hold. When the Rev. John Clark accepted the first call for a minister and the New Castle, Delaware Presbytery gave its blessing, close to 100 families were present and participating.

No record exists as to how the name of the new church was selected. *Beth-el* is Hebrew for “House of God,” and is first mentioned in the Bible in Genesis 12:8. Abraham had arrived in the promised land of Canaan and pitched his tent in “the hill country on the east of Bethel,” indicating the name of a place.



*Sketch of Bethel's first log cabin sanctuary*

The beginning was probably less than smooth as traveling for Sunday services usually meant an all-day commitment. A true pioneer pastor, Rev. Clark only stayed five years and moved on to the frontier of Western Pennsylvania, and was instrumental in maintaining the peace during the famous Whiskey Rebellion of 1794.

During the American Revolution, Bethel was without a called pastor. At least 12 members saw service in the war and helped our new nation achieve its independence. Even more fought in the War of 1812 as the Scots-Irish had little patience with the British crown, due to past religious persecution and broken promises in their homeland.

Our next pastor, Rev. George Luckey, arrived in 1784 and ministered to Bethel for the next 39 years. He was a graduate of Princeton and previously served as a tutor to young James Madison, fourth President of the United States and father of our national constitution. Rev. Luckey is one of eight former pastors who are buried at Bethel and his gravesite is said to be under the spot where the first pulpit stood in the original log cabin sanctuary.

## ***March 2019***

Sunday Services begin at 10:30 am

- Sunday, March 3            Celebration of Holy Communion  
Confirmation Ceremony
- Wednesday, March 6      Ash Wednesday and the beginning of Lent; each Wednesday during Lent, a light dinner will be served at 6:00 pm followed by a service beginning at 6:45 pm. A different area church will sponsor each dinner and conduct each service
- Sunday, March 10          Guest Liturgist, Elder Keith Reagan, Clerk of Session, Christ Our King Presbyterian Church, Bel Air, MD; Guest Minister, Rev. David Harris, Presbytery Committee on Ministry
- Saturday, March 16        6 pm; Yadah Puppet Ministries Performance
- Sunday, March 17          Special Recognition of Community members employed in the Vocational and Construction Trades; Guest Liturgist, Dr. Maurice Howard, Director of Music/Organist at Bethel, 1997-2016; Guest Minister, Rev. Brandon Brewer
- Sunday, March 24          Guest Minister, Rev. Mary Gaut, Stated Clerk of Presbytery 3 pm; Deer Creek Chorale Concert: Sacred Music Through the Ages
- Sunday, March 31          Guest Minister, Rev. Mary Gaut, Stated Clerk of Presbytery

Lent recognizes the 40 days that Christ spent in reflection and prayer concerning his impending sacrifice. It begins on Ash Wednesday and continues to Easter Sunday, when Christians celebrate his life and resurrection. Christians spend this time in personal reflection and outreach to others as a way to remember Christ's sacrifice for us all.

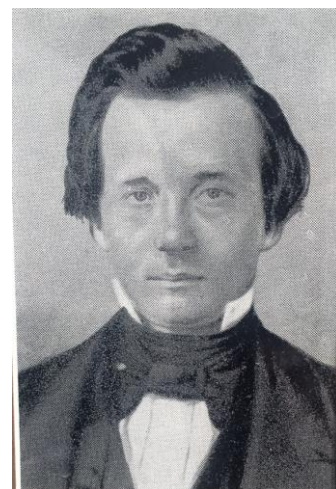
## ***April 2019***

Sunday Services begin at 10:30 am

- Sunday, April 7            Guest Minister, Rev. Richard Anderson, Bethel pastor from 1962-1967; Celebration of Holy Communion
- Sunday, April 14          Palm Sunday Celebration
- Thursday, April 18        Maundy Thursday; Tenebrae service – a light meal will be served at 6:30 pm and the service will begin at 7:30 pm
- Friday, April 19          Good Friday; A community service will be conducted at Norrisville United Methodist Church
- Sunday, April 21          Easter Sunday; Sunrise Service at 7:30 am; Breakfast served at 8:30; Regular Service at 10:30 am; Celebration of Holy Communion
- Sunday, April 28          Special Recognition of Community Members employed in the Home Arts and Domestic Services; Guest Liturgist – Elder Patricia Allingham, Clerk of Session, Havre de Grace Presbyterian Church

As the young nation grew and matured, so did Bethel. Farms and businesses in the area were well established and prosperous and the faithful congregation continued to grow. By 1855, Bethel was in a position to refuse any further financial help from the Presbytery and purchased its first manse for housing the pastor and his family. Prior to that, pastors usually maintained a small farm and their own housing and many also taught in the private schools of the area. Bethel's first Sunday School was established in the mid 1850s.

As the nation struggled with the issue of slavery and the division between northern and southern states, Maryland and Harford County were border territories that housed supporters of both causes. The Presbyterian Church itself eventually divided over the conflict.

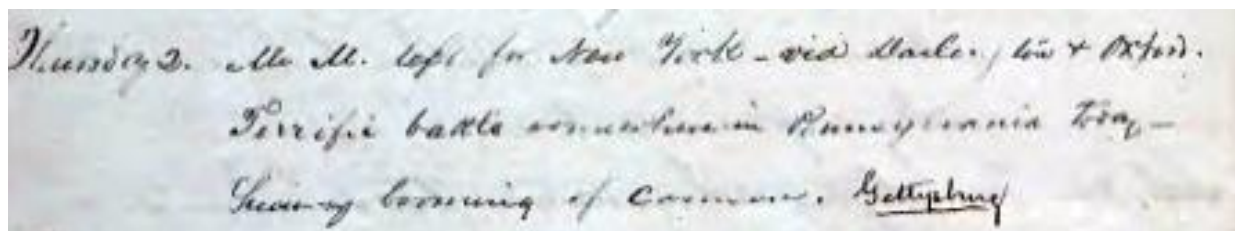


*Rev. Thomas Stuart  
Crowe Smith  
Seventh Pastor of Bethel*

The Rev. Thomas S.C. Smith became Bethel's minister in 1857 and led the congregation during the nation's Civil War. It is known that Bethel sons fought on both sides of the conflict; the congregation, and even individual families themselves were divided in their allegiance. Fourteen veterans of this war, both Confederate and Union, are buried at Bethel. No mention of the war is made in any church records, possibly indicating that the Church was seen as neutral ground and hostilities were left behind when attending services.

While Harford County and the Bethel neighborhood were largely shielded from direct engagement, Rev. Smith kept a diary in which he mentions the noise of battle in early July 1863. He later updated his notes when word arrived that the guns and cannon fire were from the important battle of Gettysburg.

The church survived this period of ultimate unrest and division. With the grace of God, eventually the wounds were healed, life continued, and Bethel members buried their veterans and their differences.



*Entry in the Diary of Rev. Thomas Smith: July 1863 "Thurs. 2<sup>nd</sup>. Terrific battle somewhere in Pennsylvania, today - hearing booming of cannons - Gettysburg"*

## **May 2019**

Sunday Services begin at 10:30 am except May 26

- Sunday, May 5                      Guest Minister, Rev. Eugene Bay, retired pastor and Bethel native son; Celebration of Holy Communion
- Sunday, May 12                     Mother's Day; Guest Liturgist, Elder Claudia Scarborough, Highland Presbyterian Church
- Sunday May 19                      Children's Day and Graduation Sunday
- Sunday, May 26                      Service time changes to 9:30 am  
Special Recognition of all who serve or have served in our Military Forces; Guest Liturgist – Mr. Jim Butcher, son of former Bethel pastor Rev. Dr. J. Russell Butcher, serving Bethel from 1943-1948

Beginning in May and continuing through October, on the first Sunday of each month after our regular Sabbath worship, a member of the congregation will lead a tour of our cemetery for anyone who wishes to join us. Our peaceful cemetery dates back to the beginning of Bethel, with the first grave marked as 1779. Eight former pastors are interred here as well as veterans from every American war. The original location of our first meeting house, a log cabin, and our first stone sanctuary will also be marked. The graves of 19 founders of Bethel will be decorated with a special medallion and ribbon.

## **June 2019**

Sunday Services begin at 9:30 am

- Sunday, June 2                      Celebration of Holy Communion; Guest Liturgist, The Honorable Lauren Arikan, Maryland House of Delegates, District 7, Proclamation from the Maryland House of Delegates
- Sunday, June 9                      Pentecost Sunday Guest Liturgist, Elder Van Reiner, Clerk of Session, First Presbyterian Church of Bel Air; Special Music – Cara Fleck Plewinski, Harpist
- Sunday, June 16                      Father's Day
- Sunday, June 23                      Special Recognition for Community Members employed in Financial Services  
3 pm; Presentation by Mr. James Chrimer, Harford County Historical Society, *Border County – Harford County and the Civil War*
- Sunday, June 30                      Guest Minister – Rev. Dr. Mary Gaut, Interim Pastor at Bethel 1994-95, Deputy Stated Clerk for the Baltimore Presbytery



Growth at Bethel continued at a strong pace in the years after the Civil War. Services were evolving as well; the acceptance of instrumental and vocal music as part of the service was gradually becoming common and appreciated. Despite some objections, the first reed organ was purchased and installed in 1868.

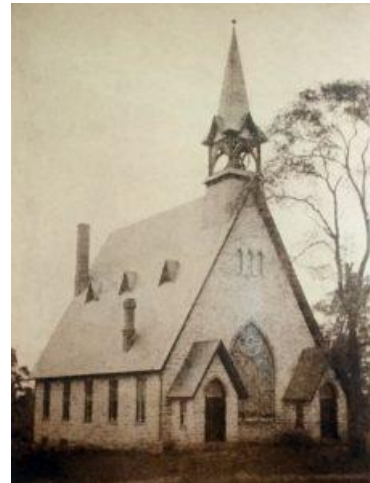


*Bethel Sanctuary 1802-1887*

With the coming of a new minister in June 1886, the congregation decided it was time to build a bigger and better house of worship. The Rev. William Stull appeared to be the right man for the job and preparations began at once. By October 1888, the new sanctuary was dedicated and the total construction cost of \$10,963 had been paid in full. Rev. Stull was extremely diligent in the two years of planning and construction. He even constructed book racks for the pews and a table for communion himself.

With the completion of the new house of worship and a sense of great religious revival, attendance and membership increased rapidly. Church societies and organizations flourished for both service and social needs. The important decision to switch to “unfermented wine” for communion was recorded in Session minutes in 1889. A sexton’s house was built in 1896.

By 1900, average weekly attendance was 200 and the growing Sunday School was even larger. In 1903 a new manse was constructed across the road from the church. One of its first inhabitants was Rev. Shadia Moore (S.M.) Engle who moved in with his wife and six children. Ministers often kept livestock and the new manse property had ample room for a horse, chickens, and a cow. Large gardens were needed for large families.



*New Bethel Sanctuary 1888*

Soon America would again be faced with talk of war, and Bethel again responded with at least 12 participants in World War I. As cars started to appear in the neighborhood, roads had to be improved and maintained. Markets opened for farm products in Baltimore and the addition of local rail transportation greatly improved the quality of life for the growing communities.

## ***July 2019***

Sunday Services begin at 9:30 am

Sunday, July 7

Celebration of Holy Communion  
Guest Minister, Rev. Dr. Stephen R. Milton, Churchville  
Presbyterian Church

Sunday, July 14

Special Recognition of Community Members employed in the  
Legal Profession

Sunday, July 21

Sunday, July 28

Guest Liturgist, Elder Sandy Lloyd, Churchville Presbyterian  
Church

The Presbyterian denomination has its roots in Scotland and the theologian John Knox. Its traditions of governance are part of the heritage with individual churches electing a Session of Elders to make decisions on behalf of the congregation. Churches are organized into a Presbytery; Presbyteries are grouped into Synods; and Synods all answer to the General Assembly. Bethel is a founding member of the Baltimore Presbytery, which was established in 1786, and is a part of the Synod of the Mid-Atlantic. Every two years the General Assembly gathers to conduct church business on a national scale. The next meeting will take place in Baltimore in 2020.

## ***August 2019***

Sunday Services begin at 9:30 am

Sunday, August 4

Celebration of Holy Communion; Guest Minister, Rev. Thomas  
Sweet, Bethel Pastor 1984-1994

Sunday, August 11

Special Recognition of Community Members employed in  
Retail Occupations

Saturday, August 17

11 am – 6 pm; Community Celebration of Bethel's  
Sesquibicentennial with Special Music, Children's Games, a  
variety of Food Trucks, Sanctuary and Cemetery Tours, and  
more! All are welcome to help us celebrate.

Sunday, August 18

Guest Liturgist, Mrs. Connie Richardson, Bethel Director of  
Music/Organist, 1984-1996

Sunday, August 25

As America recovered from the First World War, it only took ten years before a Great Depression overtook the economy. Again Bethel seemed to weather the storm and keep the faith. The first pipe organ was purchased and installed in 1926 and the cemetery was expanded through purchase of additional acreage.

Rev. Dr. C. Stewart McKenzie was called to Bethel in 1935 after Rev. William McElroy died unexpectedly while still actively serving the congregation. During this time, a Boy Scout troop was begun and a social group for young married couples, the Schooner Club, came into existence.

1938 marked the fiftieth anniversary of the “new” sanctuary and in 1944, a celebration of the 175<sup>th</sup> anniversary of Bethel was held. Growth in the congregation and Sunday School continued and more room was temporarily provided by digging out a basement under the side room and pulpit area. This had to be done by pick and shovel and the men of the congregation took on the challenge in 1947.



The work crew that created the basement to the church sanctuary, 1945  
(Young Tom Swift is kneeling in the lower right)

Once again Bethel members answered the call to defend their country during World War II. Nine veterans of this conflict are buried at Bethel, including Fred Kullmar, Jr. who was killed in action in Germany in 1944. He was the son of Pastor Fred Kullmar, Sr. who served Bethel from 1920-1926.

- September 2019** Sunday Services begin at 10:30 am starting on September 8
- Sunday, September 1 9:30 am; Celebration of Holy Communion, Guest Liturgist, Fallston Presbyterian Church Elder
- Sunday, September 8 3 pm; Presentation by Doug Washburn, Harford County Historical Society, *On the Road to Jarrettsville*, a History of our Local Area
- Sunday, September 15 The Celebration Handbell Choir, an alumni group of Bethel Handbell Choir members, will perform during Sunday service under the direction of Mrs. Nancy Rose, former handbell choir director at Bethel, 1986-2006
- Sunday, September 22 Special Recognition of Community Members employed in the Education Professions
- Sunday, September 29 Guest Liturgist, Mrs. Diane Appel, Former Bethel Creative Arts Director

The word *Ebenezer* is used in a favorite hymn, “Come Thou Fount of Every Blessing,” but was originally found in the book of I Samuel 7:12. Samuel set a stone and named it Ebenezer to commemorate the help of God in defeating the attacking Philistines. The word’s origin is Hebrew for Stone of Help and Remembrance. In the familiar hymn, the words “Here I raise my Ebenezer” again bring forth the concept of marking an important occasion with a large stone. Bethel has chosen to recognize this tradition by installing a stone memorial outside the front entrance area of the church which includes a time capsule inside. It is our hope that the memories of this year and years past placed in the capsule will be viewed at the 300<sup>th</sup> anniversary of our church in 2069.

- October 2019** Sunday Services begin at 10:30 am
- Sunday, October 6 World-wide Communion Sunday; Celebration of Holy Communion
- Sunday, October 13 Heritage Sunday recognizing the 91 Founders of Bethel and their descendants who are members of our community and/or congregation; Guest Minister – Rev. Dr. Richard Sheffield, interim pastor at Bethel, 2013-2015  
Dedication of our Ebenezer – Rock of Faith and Remembrance and the 250<sup>th</sup> anniversary time capsule
- Sunday, October 20 Special Recognition of Community Members employed in Government and Community Services
- Sunday, October 27 Guest Liturgist, Elder Gil Jones, Clerk of Session, Grove Presbyterian Church

Soon Bethel needed to expand again and under the direction of Rev. Barry Keen, a plan was made to build a Christian Education building that would include classrooms, a church office, a full kitchen, and a large meeting hall. Amazingly, Bethel was able to construct the new building with stone sourced from the same outcropping that was used to build the sanctuary. Men of the church hauled 400 tons of Deer Creek Metconglomerate (often called Deer Creek granite) from the property on Rock Ridge currently operated as Camp Wo-me-to.

The building was completed and dedicated in 1952 and has been used for church and community events for over 50 years. A house was built for a full-time church caretaker in 1955. It was eventually converted into the church office around 2000. A new manse was completed in 1968. One final building project which connected the sanctuary with the Christian Education building was completed in 1992.

After the Presbyterian Church Book of Order was changed and finally allowed women to serve as elders, the first women were elected to Bethel's Session in 1966. Anna Lee Kirkwood Smith and Kathleen Bay were groundbreakers and excellent leaders in many areas of the church, and their selection was long overdue. Both ladies could trace their family histories back to the beginnings of Bethel. Elders were now limited to two



Young Ladies Sunday School class on Easter Sunday 1954 in front of the newly constructed Christian Education Building

three-year terms which replaced the former practice of lifetime election.

In 1969, Bethel celebrated 200 years with a special service in the fall. Anna Lee Kirkwood Smith published a church history, and our current 250<sup>th</sup> celebration draws heavily on her diligent research and literary skill.

Bethel's music program continued to flourish and a handbell choir was begun in 1977 through the efforts of Mrs. Brenda Grauer, wife of then-pastor Rev. Dr. Donald Grauer. In 1987 our current Austin pipe organ was purchased and installed.

**November 2019** Sunday Services begin at 10:30 am

Sunday, November 3 All Saints Sunday and the recognition of all members who have passed away during the past year; Celebration of Holy Communion

Sunday, November 10 Special Recognition of Community Members employed in the fields of Engineering and the Sciences; Guest Liturgist, Barry Glassman, County Executive of Harford County, Maryland

Sunday, November 17 Harvest Home Sunday; collection of donated canned goods and other non-perishable food for the local food pantry; Guest Minister, Rev. Jack Carlson, Retired Pastor and Stated Clerk for the Baltimore Presbytery

Sunday, November 24

Advent is the first season in the Christian calendar and begins on the fourth Sunday before Christmas. As the word implies, it is a time of expectation and preparation for the celebration of Christ's birth. An Advent wreath with five candles will be lit each Sunday as part of our tradition. The Sanctuary will be decorated for the holiday and the liturgical color of blue, representing the hope to come, will be used throughout the altar area.

**December 2019** Sunday Services begin at 10:30 am

Sunday, December 1 First Sunday of Advent; Celebration of Holy Communion  
Guest Liturgist – Mrs. Kristen Barstow Duracka, daughter of former Bethel minister Rev. Bruce A. Barstow, serving Bethel from 1995-2006; Advent luncheon following the service

Sunday, December 8 Second Sunday of Advent  
Special Recognition of Community Members engaged in Volunteer and Faith Services

Sunday, December 15 Third Sunday of Advent; Service of the Carols

Sunday, December 22 Last Sunday of Advent  
6 pm Christmas Concert presented by Quorus Men's Choir

Tuesday, December 24 7 pm: Family and Children Christmas Eve Service  
11 pm: Candlelight Christmas Eve Service; Celebration of Holy Communion

Wednes., December 25 Christmas Day

Sunday, December 29 250<sup>th</sup> Anniversary Celebratory Presentation

As Bethel entered the new century, the youth program focused on involving the young adults in a variety of social and mission-oriented gatherings and events. A popular summer trip to the mountains of West Virginia gave young and not-so-young participants the opportunity to help lay pastor Marge Booth repair and refurbish homes of those in need. New roofs were installed, plumbing was upgraded, insulation was added, and new coats of paint brightened interiors. A mid-week raft trip gave everyone a break from their chores.

The talent of Bethel members was often put on display through the use of drama to spread the good word. Diane Appel assumed the role of Creative Arts Director and helped Bethel put on several plays, usually performed around the Advent Season. These became very popular congregational and intergenerational events and were performed for audiences that packed the church and drew attendees from throughout the community. Smaller skits and puppet shows became part of many Sunday Services, especially leading up to major holidays.



*2000 Summer Mission crew in  
West Virginia*

Diane Appel completed a labor of love when she refurbished the second floor of the Christian Education Building in the theme of Noah's Ark. Animals from all continents are depicted on the walls of the hallway, some life-sized and several in three dimensions. The emphasis on a vibrant youth program continues with our current Coordinator of Youth and Family Programs, Mrs. Chrissie Galliher. She directs the Sunday School program and arranges a Vacation Bible School each summer, as well as various events throughout the year. A Boy Scout troop continues to be sponsored and housed by the Bethel congregation.

Habitat for Humanity has established a presence in Harford County. Many churches, including Bethel, have answered the call to support this effort with mission funds and able bodies to help construct affordable homes. With many of its members skilled in the construction trades, Bethel has taken the lead in building several homes.

In 2013, the congregation celebrated the 125<sup>th</sup> anniversary of the dedication of the current church sanctuary built in 1888. This beautiful structure has been our place of worship for many generations and has been the site of baptisms, weddings, and funerals which represent the cycles of life among the congregation. As we look to the future, it is our hope and prayer that Bethel will continue to grow in faith and service as we follow the path that God creates for our congregation and community.

## *IN GRATITUDE*



*George and Evelyn Cairnes*

Bethel's 250<sup>th</sup> Anniversary Celebration has been funded by a generous gift from the estate of George and Evelyn Cairnes, long time members of Bethel and the Jarrettsville Community. George could trace his heritage back to the beginning of Bethel and served as both an Elder and Trustee for the church. Evelyn was a Deacon and active in many phases of church life. They lived on the family farm, Friendship Farm, which has been in the Cairnes family for over 200 years. Married for 71 years, the church and community mourned their passing in February and October of 2017.

The church appreciates the cooperation of their son, Elder John Cairnes, for his assistance in dedicating this gift.

-- o --

When the Bethel Session of Elders showed their support for a yearlong celebration to commemorate our 250<sup>th</sup> anniversary, a Task Force was established to plan and promote the many events. The congregation wishes to express its gratitude to the following members of the Task Force:

Elder Dennis Kirkwood, co-chair  
Elder Nancy Turner Berigtold, co-chair  
Elder Marianna Putnam  
Elder Bob Horn  
Elder Ruth Walker

Mrs. Laurie Falkner  
Mrs. Melissa Dick, recorder and Office  
Professional at Bethel  
Pastor Todd Smith

-- o --

In addition, we thank Director of Music, Ms. Kirsten Fitzsimmons, for assisting the Task Force to arrange for and schedule special music events; Mrs. Mary Beth Scott and Rev. Dr. Richard Sheffield for updating and republishing the previous printed histories of Bethel; Mrs. Alexis Ebsworth for her assistance in publishing the Celebration booklet; and the Board of Trustees and the Cemetery Committee for helping with many tasks leading up to and during the year of celebration.



## **SUMMARY OF CELEBRATION EVENTS**

**HISTORICAL PRESENTATIONS** (Each presentation will be held in the auditorium of the Christian Education Building and followed by light refreshments)

Sunday, February 10 3 pm; Rev. Dr. Amy Plantinga-Pauw, Professor of Doctrinal Theology, Louisville Theological Seminary: *The Church in Ordinary Time*; the Early History of the Presbyterian Faith in the United States

Sunday, June 23 3 pm; Mr. James Chrimer, Harford County Historical Society  
*Border County – Harford County and the Civil War*

Sunday, September 8 3 pm; Mr. Douglas Washburn, Harford County Historical Society  
*On the Road to Jarrettsville – A History of our Local Area*

### **SPECIAL MUSIC PRESENTATIONS**

Saturday, March 16 6 pm; Church Sanctuary  
Yadah Puppet Ministry Performance

Sunday, March 24 3 pm; Church Sanctuary  
Deer Creek Chorale – *Sacred Music Through the Ages*

Sunday, June 9 9:30 am (during regular service) Harpist Cara Fleck Piewinski

Sunday, September 15 10:30 am (during regular service); Church Sanctuary  
Celebration Handbell Choir, an alumni group of Bethel handbell ringers under the direction of Mrs. Nancy Rose, former handbell choir director at Bethel, 1986-2006

Sunday, December 22 6 pm; Church Sanctuary  
Quorus - Men's Chorale Ensemble Christmas Concert

### **SPECIAL COMMUNITY EVENT**

Saturday, August 17 11 am – 6 pm  
Community Celebration of Bethel's Sesquibicentennial (250<sup>th</sup>) Anniversary with Special Music, Children's Games, a variety of Food Trucks, Sanctuary and Cemetery Tours and more!

## ***CHILDREN'S SERMON ON STAINED-GLASS WINDOWS***

Throughout the year, the history and symbolism of our beautiful stained-glass windows will be highlighted during the Children's Sermon, thanks to the efforts of members of our congregation under the direction of Elder Marianna Putnam.

January 13	Marianna Putnam	Introduction
February 10	Ruth Walker	Rose Window
March 10	Margie Fielder	Dove/Open Bible
March 31	Carol Morrow	Harp/Staff
April 21	Marsha Brooks	White Lilies
May 19	Chrissie Galliher	Lamp on Bible/Noah's Ark
June 2	Gail Thomas	Plate and Chalice
September 22	Bob Dennison	Triple Window
October 13	Andrew and Jennifer Thomson	Creator's Star/Greek Cross
November 3	Jane Burgess	Grapes/Wheat
November 17	Linda McRee	Rock/Harvest Grain
December 8		Sabbath Room Windows

**MINISTERS OF BETHEL**  
***Called by the Congregation***

Rev. John Clark <i>(provided supply for several more years)</i>	1770-1775	Rev. Fred A. Kullmar, Sr.	1920-1926
Rev. George Luckey <i>(provided occasional supply until his passing in 1823)</i>	1784-1819	Rev. William R. McElroy	1927-1934
Rev. George Morrison, Sr.	1825-1837	Rev. Dr. C. Stewart McKenzie	1935-1942
Rev. Andrew B. Cross	1837-1845	Rev. Dr. J. Russell Butcher	1943-1948
Rev. Dr. Steven Yerkes	1845-1852	Rev. H. Barry Keen	1948-1955
Rev. Dr. John P. Carter	1853-1856	Rev. Dr. Johannes J. Mol	1956-1962
Rev. Thomas S. C. Smith	1857-1864	Rev. Richard V. Anderson	1962-1967
Rev. Benjamin F. Myers	1865-1871	Rev. George A. Leukel, Jr.	1967-1974
Rev. George Morrison, Jr.	1873-1876	Rev. Dr. Donald J. Grauer	1975-1982
Rev. Joseph Nelson	1877-1884	Rev. Thomas A. Sweet	1984-1994
Rev. William C. Stull	1886-1892	Rev. Bruce A. Barstow	1995-2006
Rev. Dr. William A. Price	1892-1905	Rev. Victoria R. Kennedy (Associate Pastor)	1997-2000
Rev. Shadia M. Engle	1905-1910	Rev. Nam P. Min (Associate Pastor)	2001-2003
Rev. Robert C. Jenkins	1910-1916	Rev. Linda Post	2009-2011
Rev. Arthur O. Stockbridge	1917-1919	Rev. Todd D. Smith	2015-

# **CHURCH LEADERSHIP**

**2019**

## ***Elders (Session)***

2019

Nancy Alexander  
Marsha Brooks  
Bob Horn  
Dennis Kirkwood

2020

Margie Fielder  
Sherry Kirchner  
Shirlee Nystrom  
Ruth Walker

2021

Robert Dennison  
Kirk Jones  
Carol Morrow  
Rita Taylor

## ***Deacons***

2019

Nancy Berigtold  
Janet Henderson  
Sandy Hughes  
Gail Lowe

2020

Jane Burgess  
Lynda McRee  
Jessica Sambor  
Barbara Shaul

2021

Marylin Bradford  
Kristen Comer  
Sandy Louderback  
Barbara Thompson

## ***Trustees***

2019

Eric Benson  
Steve Kauffman  
Gary Lowe  
Tom Swift

2020

Jim Boyd  
Brian Calary  
David Hinkley  
Bill Pullen

2021

Jan Berlage  
Eric Clayton  
Craig Messenger  
Don Scott

## ***Staff***

Pastor/Moderator: The Rev. Todd D. Smith

Music Director: Kirsten Fitzsimmons

Children's Youth & Family Program Coordinator: Chrissie Galliher

Office Professional: Melissa Dick

Treasurer: Dan Miller, CPA

Presbyterian Women: Mary's Circle

Presbyterian Men: Bob Horn

## ***BETHEL CHURCH***

Presbyterian Church (U.S.A.)

4135 Norrisville Road

White Hall, MD 21161

Office: 410-692-5282

Email: [churchoffice@bethel-md.org](mailto:churchoffice@bethel-md.org)

Website: [www.bethel-md.org](http://www.bethel-md.org)

Rev. Todd Smith's Cell Phone is 410-805-8604

Email Address is pastor@bethel-md.org

## *IN RETROSPECT*

To close our Celebration Booklet, we quote from the words of Elder Anna Lee Kirkwood Smith, who wrote the history of Bethel in 1969 to commemorate the 200<sup>th</sup> anniversary of this church and congregation. We believe her thoughts to be as relevant now as they were 50 years ago.

“Relatively few churches are able to look backward over two centuries to survey their past. This church at Madonna makes no claim to greatness. The lives of its members, like any other congregation, have not always been admirable. No doubt unworthy acts have been performed and unkind words said. At various periods of her history there have been discord between leaders and members. Harmony between the session and trustees has not always prevailed and rifts have caused both ministers and members to leave for other churches. There have been many unrecorded facts and perhaps some best forgotten.

It has been said that memories of an old church are peculiarly sacred. Departed workers seem to live with us again as the past is studied. This congregation has been fortunate in having many dedicated and able office holders, leaders and teachers. One has a profound admiration for both the pioneer founders and their successors who built the foundation of a church that has endured so many years.

The present and future members face a challenge in assuming the responsibility of ministering to the spiritual needs of the coming generations. Each decade brings forth new problems and needs. We trust that they may be blessed with the same God fearing spirit, faith and consecration of earlier counselors. Believing in the Christian grace of the people who gather here to worship and serve our Lord, we are convinced that Bethel, ‘the House of God,’ will serve Him and His people for many years to come.”

*“One generation passeth away and another generation cometh;  
but the earth abideth forever.” Ecclesiastes 1:4*

# White Rose Memorials

123 Paper Mill Rd., Delta PA 17314  
(717) 456-5256

Mnsunday@hotmail.com



Bethel Presbyterian Church wishes to thank Mike Sunday of White Rose Memorials for helping us to design and select a memorial stone and time capsule as part of our celebration year. His expertise and generosity in completing this task is greatly appreciated and acknowledged.